

The Historic Masonic Theatre Information

This information package is intended to assist prospective HMT tenants in understanding the established procedures and costs relative to booking The Historic Masonic Theatre for an event. Procedures and rates are subject to change from time to time without notice.

Schedule: A	AUDITORIUM RENTAL (545 seats)		
	Refers to exclusive use of the Stage, Auditorium, Dressing Rooms, Green Room, and shared use of the lobbies. 3rd floor access is not included.		
ACTIVITY:	Event with Admission Ticket Sales	Event without Admission Ticket Sales	Move-in, move-out/rehearsal
Building Rental Fees:	A flat fee of \$850 per day. <i>Up to 8 hours of use per day, \$150 per hour each additional hour, or portion of an hour, thereafter. Plus, all event-related expenses required, in addition to those included below.</i>	A flat fee of \$700 per day. <i>Up to 8 hours of use per day, \$100 per hour each additional hour, or portion of an hour, thereafter. Plus, all event-related expenses required, in addition to those included below.</i>	A flat fee equal to 60% of Building Rental Fee. <i>Plus, all event-related expenses.</i>
Included with Rental: Tenant is responsible for any applicable event-related expenses supplemental to the included items listed here.	<p>i. Included with rental:</p> <ul style="list-style-type: none"> ○ Production Manager: 1 @ 8 hr. max. ○ Front of House Manager: 1 @ 8 hr. max. ○ Stagehand: 1 @ 8 hr. max. ○ Ticket Selling Services. ○ Use of basic house sound system (excludes back-line gear, pianos and other specific sound equipment). ○ Use of basic theatrical lighting system, repertory plot (excludes follow spots, color changes, major refocusing of fixtures, etc., which may include additional staff and time). ○ Use of fly system (additional fees may apply, depending on the required use). ○ LCD projector and DVD player ○ Two 8' tables and up to ten chairs for lobby. ○ Use of all 3 lobbies and both restroom locations. ○ Concession stands may be open during the event (at management's discretion; renter may require an open stand, at an additional cost). 	<p>ii. Included with rental:</p> <ul style="list-style-type: none"> ○ Production Manager: 1 @ 8 hr. max. ○ Front of House Manager: 1 @ 8 hr. max. ○ Stagehand: 1 @ 8 hr. max. ○ Use of basic house sound system (excludes back-line gear, pianos and other specific sound equipment). ○ Use of basic theatrical lighting system, repertory plot (excludes follow spots, color changes, refocusing of fixtures, etc., which may include additional staff and time). ○ Iron, ironing board and steamer. ○ Two 8' tables and up to ten chairs for lobby. ○ Use of all 3 lobbies and both restroom locations. ○ Concession stands may be open during the event (at management's discretion; renter may require an open stand, at an additional cost). 	<p>The following conditions apply:</p> <ul style="list-style-type: none"> ○ Weekends and Holidays excluded. ○ Up to 8 hours of use per day, \$250 per hour each additional hour, or portion of an hour, thereafter. ○ Labor and equipment not included with move-in, move-out/rehearsal rental.

Gross Ticket Revenues

“Gross ticket revenues” is defined as all monies received by the tenant from the sale of admission tickets to the event.

Services and Facilities Included in Building Rental Fees

In consideration for the building rental fees, the tenant shall have the use of the basic areas inside the facility, as rental policy allows, including the following:

- o Included for every rental
 - o Normal supply of water and electricity.
 - o Heat or air conditioning.
 - o Limited on-site public parking.
 - o Normal janitorial services.

Related Services and Facilities Not Included in Building Rental Fees

- o Event-related staffing which includes, but not limited to, ushers, ticket takers, box office personnel, security personnel, operation personnel and stagehands, supplemental to the equipment and personnel included in the Building Rental Fees. All event-related staffing must be provided by the landlord at tenant’s expense (see ‘*Event-Related Charges and Rates*’, pg. 6). Note: The Historic Masonic Theatre shall have the ultimate authority in determining the number, type and locations of all event-related personnel deemed necessary for the event.
- o Box Office facilities including equipment and tickets.
- o Other event-related labor, equipment and special services (see ‘*Event-Related Charges and Rates*’, pg. 6).
- o Event related marketing.
- o Damages.

Hold Procedure

Date(s) will be held on a tentative basis upon request from a prospective tenant and subsequent confirmation in writing by The Historic Masonic Theatre. Prospective tenant must disclose the name of the performer(s). A tentative date will be held for a maximum of 10 days without reconfirmation. All holds will be considered tentative and, therefore, subject to cancellation until a formal Rental Agreement has been executed by the parties and the appropriate deposit delivered to and accepted by The Historic Masonic Theatre. Should a tentative reservation be challenged by another party, the party with the first hold will be required to immediately execute a Rental Agreement and provide the necessary deposit. To challenge a tentative hold by another party, the challenging party must request the date(s) in writing and forward the necessary deposit. (Note: The previous reservation will not be challenged until the deposit is received.) Should the first reservation be canceled, a Rental Agreement will be issued to the challenging party. Should the party with the previous reservation execute a Rental Agreement; the deposit will be returned to the challenging party.

Deposit

A non-refundable and non-interest bearing advance deposit is required with the signed Rental Agreement. The Historic Masonic Theatre reserves the right to require an additional deposit to cover anticipated event-related expenses. Payment must be made by cash or credit card or cashier's check and payable to The Historic Masonic Theatre.

Ticket Sales

Patron Manager has the exclusive right to print, sell and distribute tickets to all events at The Historic Masonic Theatre. Further, the tenant shall pay, if and where applicable, a credit card service fee of 3.25 percent on the sale of tickets by credit card.

Insurance

Each tenant may be required to purchase a comprehensive liability insurance policy providing coverage of AT LEAST \$1,000,000 for any one accident or occurrence, \$1,000,000 for any one person injured in any accident or occurrence, and \$2,000,000 for property damage liability. Actual insurance requirements will be determined by The Historic Masonic Theatre management based on the size and nature of the event. Masonic Theatre, Inc., Masonic Theatre, LLC., and The Masonic Theatre Preservation Foundation must be named as additional insured on the insurance certificate. A certified copy of the insurance policy containing appropriate coverage will be required 30 days prior to the event. More information is provided in The Historic Masonic Theatre Rental Agreement.

Floor Plans

Floor plans must be submitted at least 30 days prior to the move-in of the event for approval.

Food and Beverage Service

The Historic Masonic Theatre and/or its designated concessionaire, retains the exclusive right to operate all food and beverage concessions, of any nature in The Historic Masonic Theatre, and further, to retain all revenues derived there from.

Souvenir, Novelty and Merchandise Sales

If event-related souvenirs, novelties, and programs are sold during an event, the tenant shall remit to The Historic Masonic Theatre a commission fee equivalent to 10 percent of gross revenue after deduction of all applicable state and local sales taxes. The tenant is responsible for providing and paying for all sellers.

For More Information

Contact:

Jeff Stern, Executive Director

jeff.stern@historicmasonictheatre.com



The Auditorium



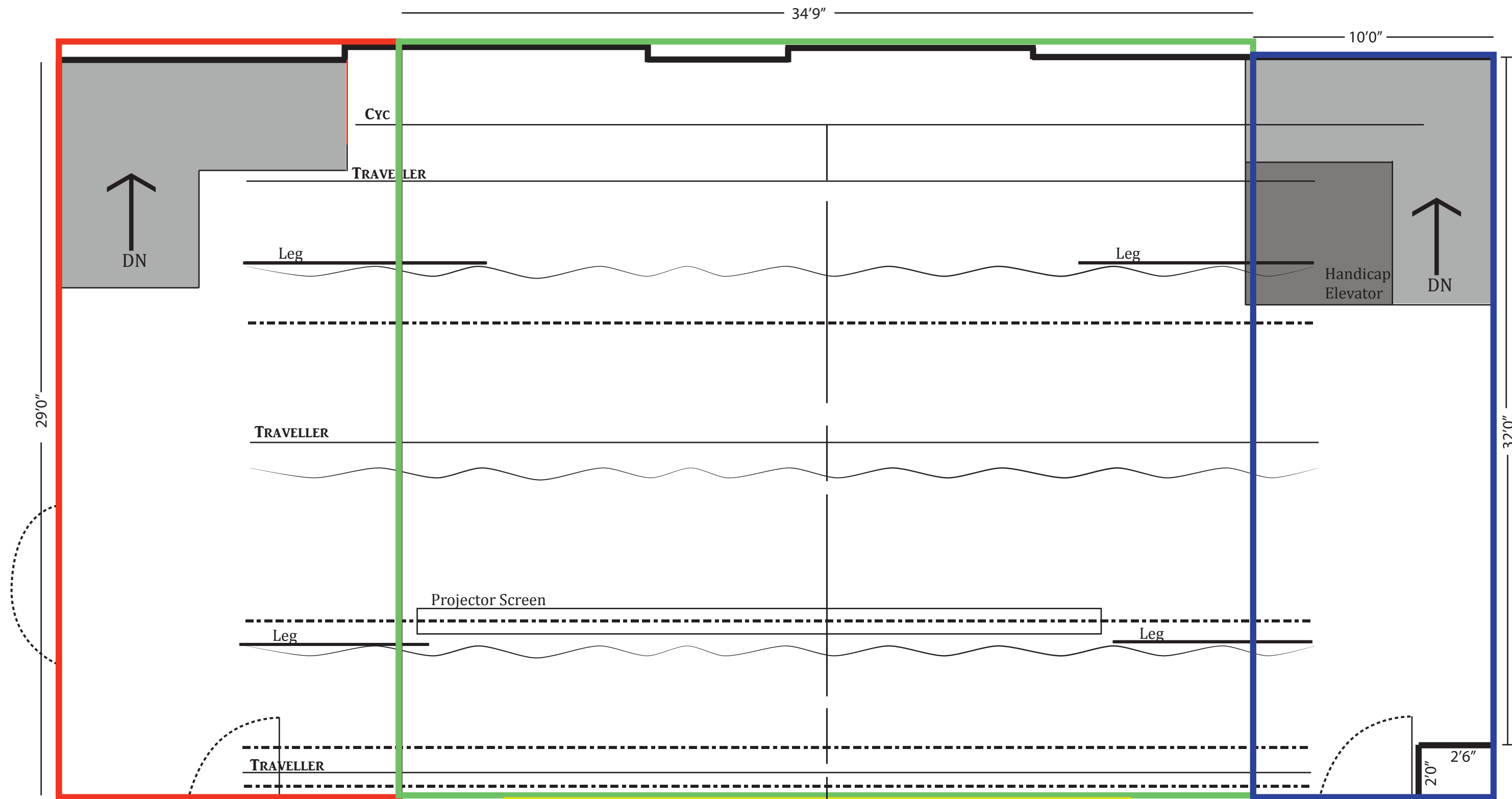
The Main Lobby



The Annex Lobby



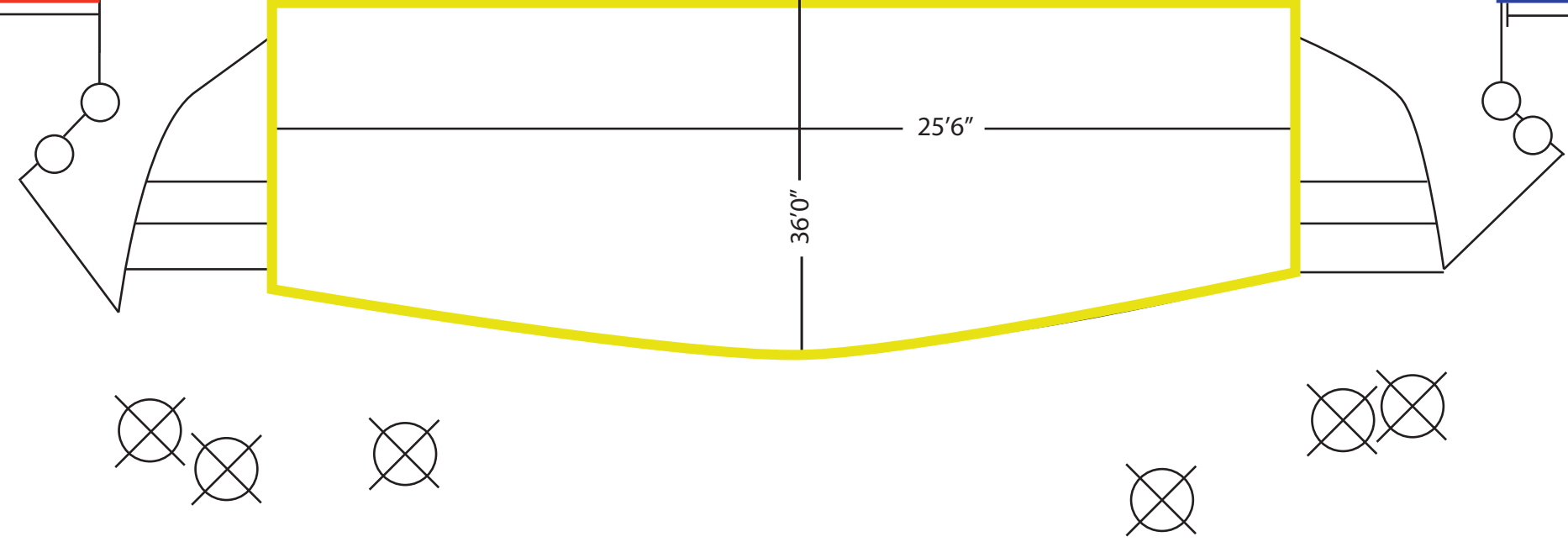
The Auditorium Balcony and Catwalk



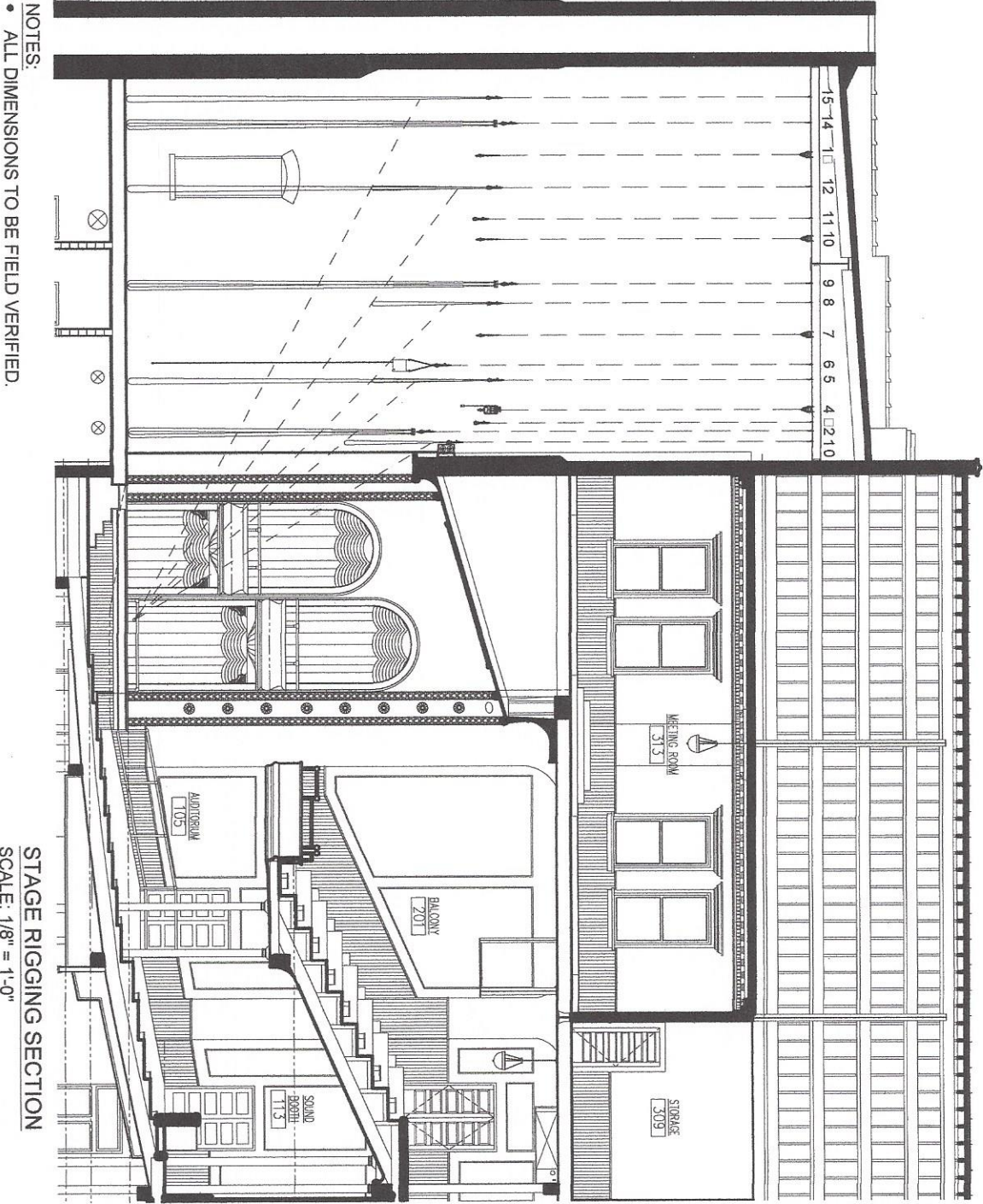
Available Space:
SL Wing: 276 sf
SR Wing: 362 sf
Stage: 695 sf
Apron/ Orchestra Pit: 153 sf

Historic Masonic Theatre	
Date: 3/7/2017	JTB
Scale: 1/4 Inch	
Dead Hung Bar	-----
Borders	~~~~~
1st Row Sight Lines	⊗

Available Space:
SL Wing: 276 sf
SR Wing: 362 sf
Stage: 695 sf
Apron/ Orchestra Pit: 153 sf



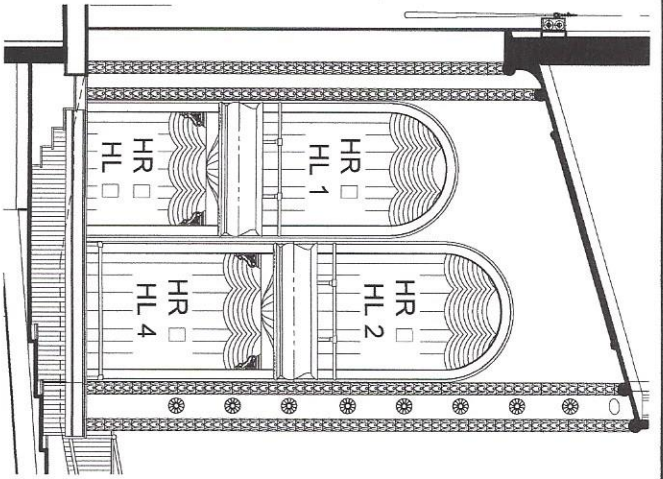
LINE SET #	DESCRIPTION
0	FIRE CURTAIN (BY OTHERS)
1	AUSTRIAN VALANCE
2	GRAND DRAPE
3	GENERAL PURPOSE
4	1ST ELECTRIC
5	BORDER/LEGS
6	PROJECTION SCREEN
7	2ND ELECTRIC
8	BORDER
9	MIDSTAGE TRAVELER
10	3RD ELECTRIC
11	GENERAL PURPOSE
12	BORDER/LEGS
13	4TH ELECTRIC
14	REAR TRAVELER
15	CYCLOPAMA



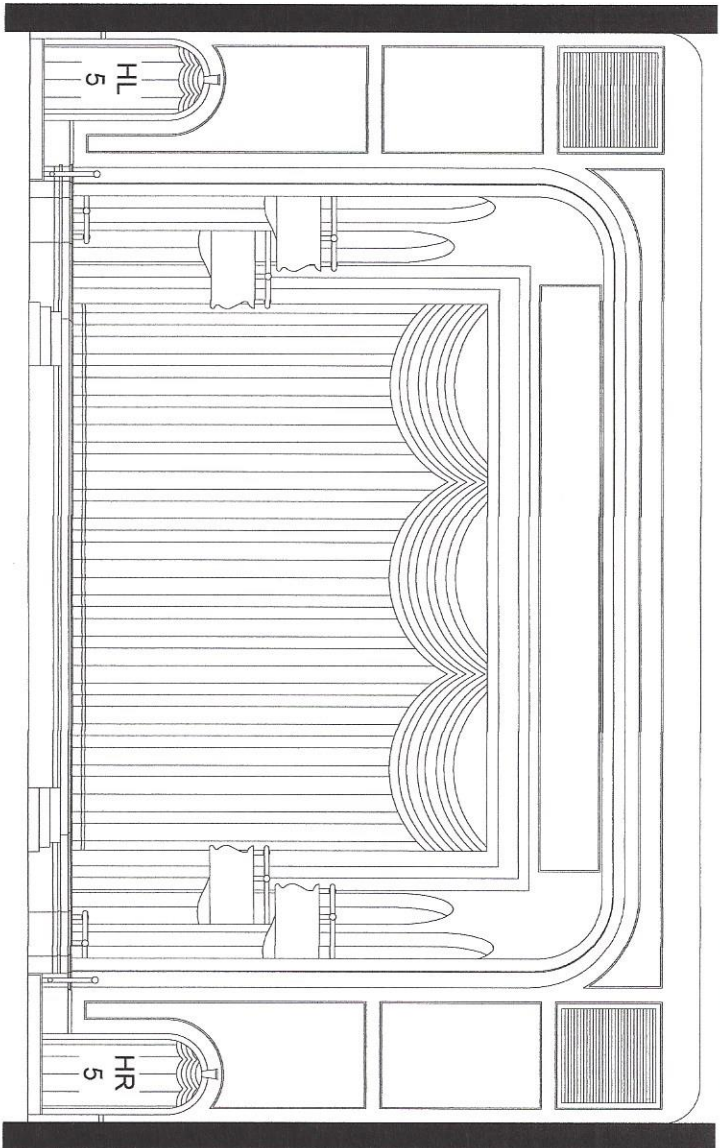
STAGE RIGGING SECTION
SCALE: 1/8" = 1'-0"

STAGE RIGGING SECTION SHEET NO: MT-RS-0	JOB: MASONIC THEATRE LOCATION: Clifton Forge, Virginia CONTRACT WITH: Thor Construction PROJECT MANAGER: Jonathan Mercer TITLE: Stage Rigging Section	DATE: 10/1/15 BY: JHM REVISIONS:	FILE NAME: Rigging Section.dwg
	DRAWING:		


PRODUCTIONS UNLIMITED, INC.
 870 ANDERSON RIDGE ROAD
 GREER, SOUTH CAROLINA 29651
 864-675-6146
 FAX 864-675-0820



BOX SEATING DESIGNATIONS - SECTION
NOT TO SCALE



BOX SEATING DESIGNATIONS - FRONT ELEVATION
NOT TO SCALE

NOTES:
• ALL DIMENSIONS TO BE FIELD VERIFIED PRIOR TO CURTAIN FABRICATION.

ITEM / DESCRIPTION	PANEL QUANTITY	ATTACHMENT METHOD	CURTAIN FABRIC	FABRIC COLOR	FACE FULLNESS	LINING FABRIC	LINING COLOR	CURTAIN SIZE
BOX SEATING VALANCE	8	STAPLED TO NALLER BOARD	"MEMORABLE" 25oz VELOUR	TBD	200%	"RANGER" FABRIC	BLACK	AUSTRIAN (AS PER DRAWINGS)
HR & HL 1	4	TIED TO BATTEN ATTACHED TO WALL	"MEMORABLE" 25oz VELOUR	TBD	100%	"RANGER" FABRIC	BLACK	4'-0" W x 13'-0" H
HR & HL 2	4	TIED TO BATTEN ATTACHED TO WALL	"MEMORABLE" 25oz VELOUR	TBD	100%	"RANGER" FABRIC	BLACK	4'-0" W x 12'-0" H
HR & HL 3	4	TIED TO BATTEN ATTACHED TO WALL	"MEMORABLE" 25oz VELOUR	TBD	100%	"RANGER" FABRIC	BLACK	4'-0" W x 7'-0" H
HR & HL 4	4	TIED TO BATTEN ATTACHED TO WALL	"MEMORABLE" 25oz VELOUR	TBD	100%	"RANGER" FABRIC	BLACK	4'-0" W x 10'-0" H
HR & HL 5 VALANCE	2	STAPLED TO NALLER BOARD	"MEMORABLE" 25oz VELOUR	TBD	200%	"RANGER" FABRIC	BLACK	AUSTRIAN (AS PER DRAWINGS)
HR & HL 5	4	TIED TO BATTEN ATTACHED TO WALL	"MEMORABLE" 25oz VELOUR	TBD	100%	"RANGER" FABRIC	BLACK	2'-8" W x 9'-0" H

<p>PRODUCTIONS UNLIMITED, INC. 870 ANDERSON RIDGE ROAD GREER, SOUTH CAROLINA 29651 864-675-6146 FAX 864-675-0820</p>	
<p>JOB: MASONIC THEATRE LOCATION: Clifton Forge, Virginia CONTRACT WITH: Thor Construction PROJECT MANAGER: Jonathan Mercer</p>	
<p>DATE: 10/1/15 BY: JHM REVISIONS:</p>	<p>TITLE: <input type="checkbox"/> Seating Dra^{er} <input type="checkbox"/> Designations <input type="checkbox"/> Schedule FILE NAME: Rigging Section.dwg</p>
<p>BOX SEATING DRAPERY DESIGNATIONS <input type="checkbox"/> SCHEDULE</p>	
<p>SHEET NO.: MT-RS-09</p>	



PROJ. HOIST
POWERHEAD
(TYP. OF 4)

FOUNDATION
RIGGING
CONTROLLER
FLOOR
LEVEL

NOTES:
• ALL DIMENSIONS TO BE FIELD VERIFIED.

STAGE RIGGING PLAN
SCALE: 1/4" = 1'-0"

SHEET NO: MT-RS-02	DATE:	10/11/15	JOB:	MASONIC THEATRE
	BY:	JHM	LOCATION:	Clifton Forge, Virginia
	REVISION:		CONTRACT WITH:	Thor Construction
	DRAWING:		PROJECT MANAGER:	Jonathan Mercer
	TITLE:	Stage Rigging Plan	FILE NAME:	Rigging Plan.dwg

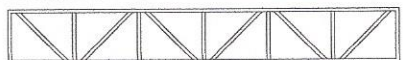
PRODUCTIONS UNLIMITED, INC.
 870 ANDERSON RIDGE ROAD
 GREER, SOUTH CAROLINA 29651
 864-675-6146
 FAX 864-675-0820

MASONIC THEATRE STAGE RIGGING SCHEDULE

LINE SET #	DESCRIPTION	DISTANCE FROM PLASTER LINE	BATTEN LENGTH	BATTEN TYPE	SUSPENSION TYPE	APPROX LOAD	CURTAIN FABRIC	FABRIC COLOR	LINING FABRIC	LINING COLOR	FULLNESS	CURTAIN TRACK	CURTAIN SIZE
0	FIRE CURTAIN (BY OTHERS)												
1	AUSTRIAN VALANCE	1'-2"	43'-0"	SINGLE	DEAD HUNG	450#	"MEMORABLE" 25oz.	TBD	"RANGER"	BLACK			SEE DRAWING
2	GRAND DRAPE	2'-0"	43'-0"	SINGLE	DEAD HUNG	800#	"MEMORABLE" 25oz.	TBD	"RANGER"	BLACK	100%	H&H 400	23'-0" W x 21'-6" H x 2 PANELS
3	GENERAL PURPOSE	2'-8"	43'-0"	SINGLE	DEAD HUNG	150#							
4	1ST ELECTRIC	3'-8"	43'-0"	SINGLE	MOTORIZED HOIST	1,900# MAX							40'-0" W x 9'-0" H
5	BORDERLEGS	6'-0"	43'-0"	SINGLE	DEAD HUNG	300#	"MEMORABLE" 25oz.	BLACK			FLAT		10'-0" W x 28'-0" H x 2 PANELS
6	PROJECTION SCREEN	7'-2"	28'-0"	SINGLE	DEAD HUNG	1,100#							
7	2ND ELECTRIC	9'-6"	43'-0"	SINGLE	MOTORIZED HOIST	1,900# MAX							40'-0" W x 9'-0" H
8	BORDER	12'-0"	43'-0"	SINGLE	DEAD HUNG	225#	"MEMORABLE" 25oz.	BLACK			FLAT		
9	MIDSTAGE TRAVELER	13'-6"	43'-0"	SINGLE	DEAD HUNG	625#	"MEMORABLE" 25oz.	BLACK			50%	H&H 400	23'-0" W x 28'-0" H x 2 PANELS
10	3RD ELECTRIC	17'-0"	43'-0"	SINGLE	MOTORIZED HOIST	1,900# MAX							40'-0" W x 9'-0" H
11	GENERAL PURPOSE	18'-6"	43'-0"	SINGLE	DEAD HUNG	150#							
12	BORDERLEGS	21'-0"	43'-0"	SINGLE	DEAD HUNG	300#	"MEMORABLE" 25oz.	BLACK			FLAT		10'-0" W x 28'-0" H x 2 PANELS
13	4TH ELECTRIC	23'-6"	43'-0"	SINGLE	MOTORIZED HOIST	1,900# MAX					50%	H&H 400	21'-0" W x 28'-0" H x 2 PANELS
14	REAR TRAVELER	26'-0"	43'-0"	SINGLE	DEAD HUNG	625#	"MEMORABLE" 25oz.	BLACK					
15	CYCLOPRAWA	28'-0"	43'-0"	SINGLE	DEAD HUNG	250#	LENO-FILLED	WHITE			SEAMLESS		40'-0" W x 28'-0" H

NOTES:

- MOTORLIED HOIST SYSTEM BY ELECTRONIC THEATRE CONTROLS, INC.
- CURTAIN TRACK SYSTEMS BY H&H SPECIALTIES, INC.
- BATTENS AND TORM PIPES BY PRODUCTIONS UNLIMITED, INC.
- FABRICATED HARDWARE TO BE FINISHED FLAT BLACK UNLESS OTHERWISE NOTED.
- CLEARANCES MUST BE ALLOWED BY OTHER CONTRACTORS FOR THE INSTALLATION OF THIS EQUIPMENT.
- ALL DIMENSIONS TO BE FIELD VERIFIED PRIOR TO INSTALLATION.
- HARDWARE MUST BE PROTECTED FROM DAMAGE AFTER INSTALLATION.
- STAGE AND ACOUSTIC DRAPERY TO BE INSTALLED AFTER ALL THE FINISHES ARE COMPLETE AND THE SPACE IS 100% DUST FREE.
- DRAPERIES HAVE A LONG LEAD TIME SO PLEASE CHOOSE COLORS AS SOON AS POSSIBLE.

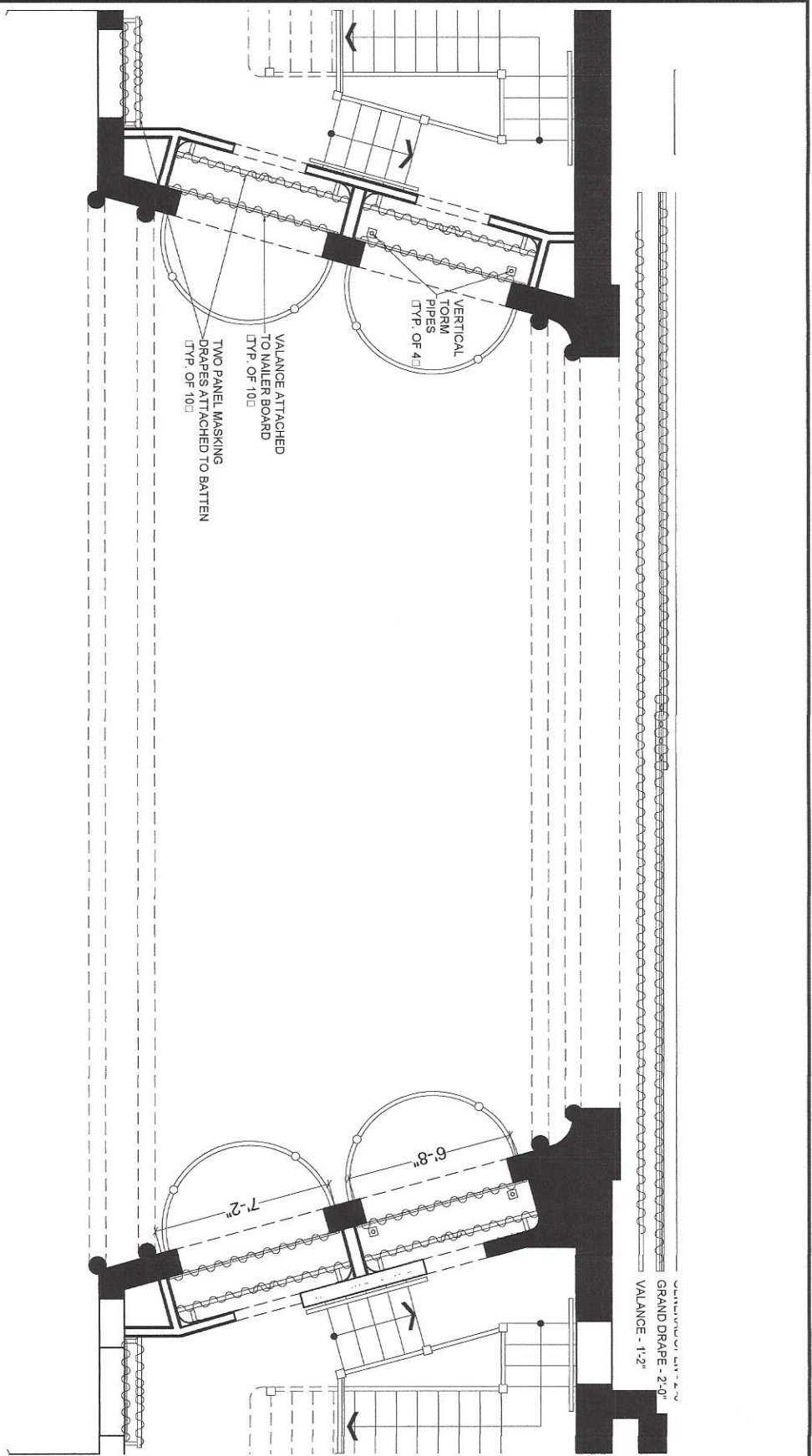


PRODUCTIONS UNLIMITED, INC.
 870 ANDERSON RIDGE ROAD
 GREER, SOUTH CAROLINA 29651
 864-675-6146
 FAX 864-675-0820

JOB: MASONIC THEATRE		FILE NAME: Rigging Plan.dwg
LOCATION: Clifton Forge, Virginia		
CONTRACT WITH: Thor Construction		
PROJECT MANAGER: Jonathan Mercer		
TITLE: Stage Rigging Schedule <input type="checkbox"/> Notes		
DATE: 10/1/15	BY: JHM	
REVISION:	DRAWING:	

STAGE RIGGING SCHEDULE NOTES

SHEET NO: MT-RS-01



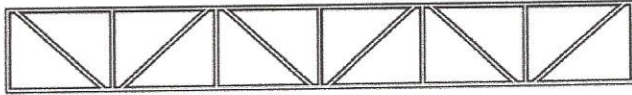
- NOTES:
- ALL DIMENSIONS TO BE FIELD VERIFIED.
 - TORM PIPES TO BE ATTACHED TO FLOOR AND CEILING STRUCTURE.

BOX SEATING DRAPERY PLAN
 SCALE: 1/4" = 1'-0"

SHEET NO: MT-RS-01	DATE:	10/1/15	JOB:	MASONIC THEATRE
	BY:	JHM	LOCATION:	Clifton Forge, Virginia
DRAWING:	REVISION:		CONTRACT WITH:	Thor Construction
			PROJECT MANAGER:	Jonathan Mercer
	TITLE:	Box Seating Dra Plan	FILE NAME:	Rigging Plan.dwg

PRODUCTIONS UNLIMITED, INC.
 870 ANDERSON RIDGE ROAD
 GREER, SOUTH CAROLINA 29651
 864-675-6146
 FAX 864-675-0820

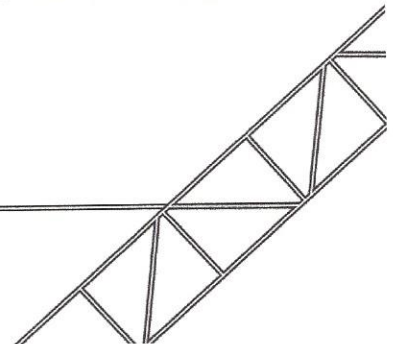
BOX SEATING DRAPERY PLAN



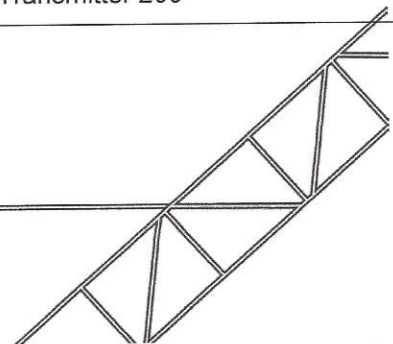
PRODUCTIONS UNLIMITED, INC.

Masonic Theatre
Audio/Video Restoration
Bill of Materials

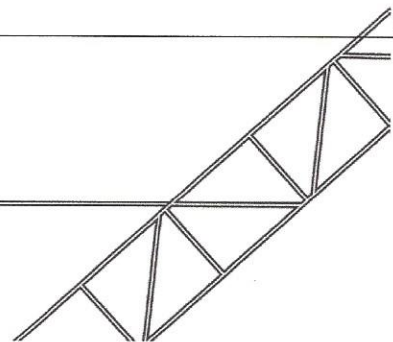
Qty	Manufacturer	Item #	Description
Mixer			
1	Yamaha	MY16-CII	COBRANET INTERFACE
1	Yamaha	QL5	Digital audio mixing console with 32 mic inputs, 16 outputs and Dante networking.
2	Yamaha	LA1L	Goose Neck Lights for QL5
Speakers			
26	Atlas Soundolier	FA97-6	Flush Mounted Ceiling Round Enclosure for FA-116 and FA136 Loudspeakers.
26	Atlas Soundolier	FA116-T72	Loudspeaker/Transformer.
26	Atlas Soundolier	FA95-6	Flush Mounted Ceiling Round Enclosure for FA-116 and FA136 Loudspeakers.
6	Atlas Soundolier	AT35	35W Volume Control PV, PV2
2	Renkus-Heinz	Iconyx IC8-R-II	Iconyx Steerable Speaker with Rhaon
2	Renkus-Heinz	HK-IC8R&16R	Hinge Kit for IC8
8	Renkus-Heinz	CF121M-2	2-way 12" LF x 2" HF active 500W floor monitor.
4	Renkus-Heinz	IC215S-FR	Double 15" Active Subwoofer with Rhaon
2	Renkus-Heinz	IC2-FR	Iconyx Squared full range steerable speaker with Rhaon
4	Tannoy	Di6T	6" Wall mount speaker with 70.7 volt Transformer.
2	Tannoy	VLS7 en54 (white) 8001 7861	column speaker for delays
2	Tannoy	VLS pan/tilt bracket 80017231	pan tilt bracket for vls7
Amplifiers			
2	Lab Gruppen	C20:8X	8x250 Watts per Channel into 4 Ohms.
Processing			
2	BIAMP	Tesira Server	Tesira Server I/O with Cards
Sources			
2	AKG	C414 XLS	Large diaphragm condenser microphone
2	AKG	C451B	Small diaphragm condenser microphone



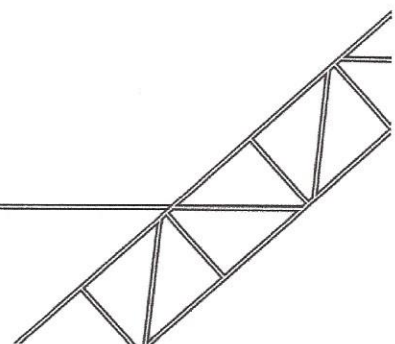
3	Audix	ADX40	hanging choir mic
4	Countryman	Type 85	Active Direct Box
3	Crown	PCC160	Boundary Microphone
1	Denon	DN-500BD	Universal BLURAY/DVD/CD Player
2	Denon	DN-501C	professional CD player, replacement for discontinued item Denon DN-C620
1	DPA	3511ES	Stereo Recording Microphone Kit
2	Radial	JDI-MK3	Passive Direct Box
1	Radial	PROAV2	Passive Multimedia Direct Box
2	Sennheiser	MD 421-II	Dynamic Cardioid.
1	Shure	Beta 52A	Dynamic Kick Drum Mic.
2	Shure	Beta 57A	Dynamic Supercardioid.
6	Shure	Beta 58A	Dynamic Supercardioid.
4	Shure	Beta 98AMP/C	Condenser Drum Mic w A75M Mount
4	Shure	MX150B/O-TQG	Replacement for WL50 microphone
6	Shure	SM 57-LC	Dynamic Cardioid. Existing MX412
2	Shure	SM 81-LC	Cardioid condenser.
1	Shure	UA844SWB	Antenna Distribution System for Shure ULX System
4	Shure	ULX/87	Handheld transmitter with SM87 capsule
4	Shure	ULXS14	Wireless receiver with bodypack transmitter
2	Tascam	SS-CDR200	CD/ Solid State recorder, replacement for discontinued Tascam SS-CDR1
34	Whirlwind	MK425NP	25' mic cables
Control			
1	BITTREE	DSGIGE224D	DSGIGE224D RJ45 Patchbay
1	Crestron	AV3	Dual Bus Control System Processor
4	Crestron	C2N-UNI8IO	I/O Expander via Cresnet
1	Crestron	DGE-100	Graphics Engine
2	Crestron	DMC-4K-C	DM HDBaseT Input Card
2	Crestron	DMC-4K-CO-HD	DM Output Card (2x HDBaseT outs)
1	Crestron	DMC-4K-HD	DM HDMI Input Card
1	Crestron	DMC-4K-HDO	DM Scaling HDMI Output Card (2x HDMI, 2x audio)
1	Crestron	DMC-DVI	DM DVI/balanced Audio Input Card
1	Crestron	DM-MD8X8-RPS	8x8 Digital Media Switcher with redundant power supply
3	Crestron	DM-RMC-SCALER-C	Digital Media 8G+ Receiver/Scaler/Controller
1	Crestron	DM-TX-200-C-2G	Wall Plate DigitalMedia 8G+ Transmitter 200



1	Crestron	DM-TX-4K-100-C-1G	DM Transmitter/Controller
1	Crestron	TSW-1052	10.1" Touchscreen Monitor
1	Dell	S2240T	22" LED Touchscreen Monitor
1	Hubbell	P5E48UE	48 Port Ethernet Cat 5E Patch Panel
1	Middle Atlantic	BR1	1RU Brushed Grommet Panel
1	Netgear	GS728TP	Power Over Ethernet Switch 24-port
1	RDL	STM-2	Low Noise Mic Preamp.
1	TBD	TBD	24-Port CAT6 Patch Panel
1	Vaddio	999-9919-000	RoboSHOT 30 PTZ Camera, QUSB Receiver (HDMI-out)
Intercom			
8	ClearCom	RS-701	Single Channel Belt Pack.
6	ClearCom	CC-400	Double Muff Headset.
2	ClearCom	CC-26K-X4	Single Ear Lightweight Headset - 4 Pin Female Xlr CC-26K-X4
1	ClearCom	MS-702	2 Channel Main Station.
8	Whirlwind	MK425NP	Intercom Cable25'-0".
Program System			
1	AKG	GN30 E5pin	Gooseneck Microphone with LED Ring, for paging
1	Chief Mfg	LTMU	Large Fusion Micro-Adjustable Tilt Wall mount for TV
2	Sennheiser	SZI 1029	Large Area Emitter panel, Assisted Listening
1	Sennheiser	SI 1015	High Frequency Modulator, Assisted Listening
1	Sennheiser	GA1031-CC	Rack adapter for SI 1015
16	Sennheiser	HDI830	High Frequency Headset 2.3 Mhz
4	Sennheiser	EKI 830	Bodypack infrared receiver for two channel/stereo (2.3/2.8 MHz) systems. Includes BA300 rechargeable battery.
4	Sennheiser	EZT 3011	Induction neck loop especially designed for use with RI830S
1	Sennheiser	HC230	20 Space Carrying Case, Charger Station, and power supplies. For use with RI150, RI250, HDI302 series headsets.
2	Sennheiser	L300-10	Charger with power supply for ten BA300 and ten HDI830, RI830, RI830-S, and RI900 receivers.
1	Sharp	LC-43LE653U	Aquos 43" 1080p LED TV
Projection			
1	Da-Lite	38699E	Professional Electrol 18'x24' Motorized Front Projection Screen extra Black as needed.
1	Digital Projection	113-121	Mount for Projector
1	Digital Projection	E-Vision 8000	Digital Projector. Single Chip DLP, High Def. with Lens
Connectivity			
1	BITTREE	B48DC-FNSST/E3 M2OU12L	TRS Patchbay



1	ADC	PPA3-14-MKII-NO	Line Level 48 Point 1/4" TRS.
12	ADC	BK2 TRS	1/4" x 24" Patch Cords Black LPC2400-110
12	ADC	R2 TRS	1/4" x 24" Patch Cords Red
4	Canare	XLR TRS 6 (STF6 or STM6)	Star Quad 6'-0" Cable with XLR-Plug to 1/4" TRS Plug.
12	Canare	mic 10 (MKQ10NP)	Star Quad 10'-0" Microphone Cable.
24	Canare	mic 25 (MKQ25NP)	Star Quad 25'-0" Microphone Cable.
6	Canare	mic 50 (MKQ50NP)	Star Quad 50'-0" Microphone Cable.
2	Canare	RCA 10 (M3110)	Star Quad 10'-0" Cable with RCA Plugs.
2	Canare	RCA TS 6 (M3106)	Star Quad 6'-0" Cable with RCA Plug to 1/4" TS Plug.
4	Canare	TRS 10 (ST10)	Star Quad 10'-0" Cable with 1/4" TRS Plugs.
4	Canare	TS 10 (SN10)	Star Quad 10'-0" Cable with 1/4" TS Plugs.
4	CISCO	SG300-20	20 port, gigabit switch
Rack/Power			
2	Gator Case	G-TOUR 16U CAST	ATA Flight Case with Removable Covers, 16 RU with Casters
3	Middle Atlantic	SR-40-28	40 Space Swinging Wall Rack, 26" Deep.
4	Middle Atlantic	D2	Rack Mount Drawer - 2 Space
4	Middle Atlantic	D4	Rack Mount Drawer - 4 Space
1	SSRC	SWITCH SUPER	Sequencing, DMX
Accessories			
4	AKG	KM21021B	Extra Tall Tripod Stand with Boom
6	AKG	KM260/1	Round Base Microphone Stand.
6	AKG	KM259	Short Tripod Stand with Boom
12	K&M	21020.500.55	Substitution for AKG KM21020B
2	Sennheiser	HD280 Pro	Closed Headphones-8-25kHz response

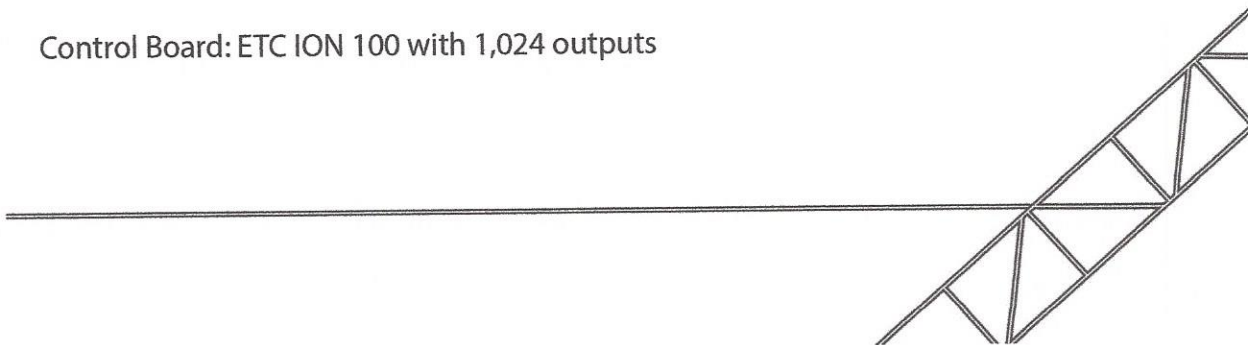


Masonic Theatre
Clifton Forge, VA

Lighting Fixture and Accessories Table of Contents and Bill of Materials

Page #	Qty	Model #	Description	Manufacturer
1			Cover Page	
3-4			Table of Contents and Bill of Materials	
5-39			Data Sheets (Listed Page Number Indicates Included Data Sheet)	
Lighting Instruments:				
Ellipsoidals				
5-8	40	400FB-B	Source 4 Ellipsoidal Body w/ Stage Pin Plug	ETC
9-13	30	CSSPOT	ColorSource Spot	ETC
	25	419LT	19° Lens Tube	ETC
	17	426LT	26° Lens Tube	ETC
	21	436LT	36° Lens Tube	ETC
	12	450LT	50° Lens Tube	ETC
Wash				
15-20	20	PAR-EA-B	Source 4 Par EA w/ Stage Pin Plug	ETC
21-25	20	CSPAR	ColorSource Par	ETC
	20	SELR_-7.5	D40 Diffusers (for CS Par) - TBD	ETC
	20	CSPARFSY	CS Par Floor Stand Yoke	ETC
Cyc Lighting				
27-28	7	OVATIONC640FC	Ovation 640FC LED Cyc Light	Chauvet
Accessories:				
Common Instrument Accessories				
29	60	MAB	Mega Clamp, Black	Light Source
	125		Safety Cable	
31-32	65	HPL 750X	750 HPL Lamp	Ushio
33	12	MSAB24	24" Mega Sidearm	Light Source
Ellipsoidal Instrument Accessories				
35	6	2840	Stacker Top Hats for Ellipsoidals	City Theatrical
	2	2180	Drop-In Iris	City Theatrical
	12	400PH-A	A-size Pattern Holder	ETC

Control Board: ETC ION 100 with 1,024 outputs



Rigging Accessories				
	6		50# Boom Base	PUI
37	6		10' Boom Pipe with Welded Ring	PUI
Cable:				
Adapters				
	4	70005	20A Male Stage Pin to 15A Female Edison	Rosco
Stage Pin Cable, 120V, 20A				
	12		Stage Pin Twofer	SSRC
	24		Stage Pin Extension 10'	SSRC
	12		Stage Pin Extension 25'	SSRC
	10		Stage Pin Extension 50'	SSRC
	2		Stage Pin Extension 100'	SSRC
Powercon Cable, 120V, 20A				
	20	PE700J-10-PCN	PowerCon Jumper 10'	Lex
	25	PE700J-15-PCN	PowerCon Jumper 15	Lex
	6	PE700J-25-PCN	PowerCon Jumper 25	Lex
DMX Cable				
	20	DMX-5P-10	DMX 10'	Lex
	25	DMX-5P-15	DMX 15'	Lex
	6	DMX-5P-25	DMX 25'	Lex
	6	DMX-5P-50	DMX 50'	Lex
Ethernet Cable				
	4	CAT5-EC-25	Cat5 Ethercon Extension 25'	Lex
	2	CAT5-EC-50	Cat5 Ethercon Extension 50'	Lex
	2	CAT5-EC-100	Cat5 Ethercon Extension 100'	Lex
Cable Accessories				
	1	25-030001	Pin Splitter Tool	BMI
DMX Signal Devices:				
DMX Tester				
39	1	XMT-350	RDM & DMX Measurement Tool	Swisson

ProductionsUnlimitedInc.com
 870 Anderson Ridge Road Greer, SC 29651
 Phone: 864.675.6146 Fax: 864.675.0820

